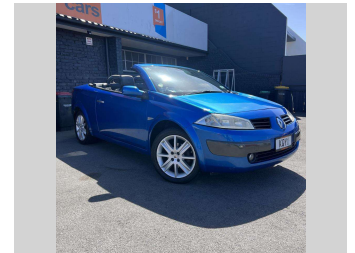


2004 Renault MEGANE



Purchase Price


\$5,990

Includes GST
Excludes on-road costs of \$300

Indicative repayments


\$41.49 per week*

Based on a 48 month term & no deposit.
Total repayments (208) = **\$8,630.74**



FINANCE AVAILABLE

Gain peace of mind with Mechanical Breakdown Insurance. Ask us how.



Top features

- » 16 Valve
- » ABS Braking
- » Air Conditioning
- » Alloy Wheels
- » CD Player
- » Central Locking
- » Child seat anchor poin...
- » Climate Control
- » Cruise Control
- » Cup holder
- » Digital Display
- » Electric Mirrors
- » Eletric Windows
- » Leather Seats
- » Power steering
- » Sun roof

Body Style
2 door, Convertible

Odometer
242,900 km

Engine
1998 cc, Internal Combustion

Fuel Type
Petrol

Transmission
Automatic

Wheels
-

VIN
VF1EM050A32604744

Interior
-

Safety
-

Reg No.
KQY1

Ext Colour
Blue

History
NZ New

Seats
4 seats

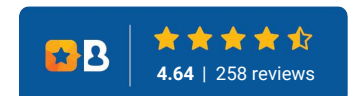
CO2 Emissions
-

Energy Economy
-

Stock ID: 5502



Costello Cars | Phone 03 338 9161 | Email sales@costellocars.co.nz
51 Moorhouse Avenue, Addington, Christchurch 8011, New Zealand
www.costellocars.co.nz



* Costello Cars is not a lender nor a financial adviser. Any amounts displayed should not be seen as an offer of finance or taken as financial advice. The interest rate, fees and loan term used in this calculation may not actually represent those available from lenders. Actual interest rates, fees and loan terms will vary per lender and are typically based on an assessment of your credit risk and responsible lending criteria. Any repayment amounts displayed are indicative only and have been calculated using several other indicative inputs. The interest rate used in this calculation is an arbitrary 13.95%, however exact interest rates vary per lender. The term of the loan used in this calculation is 48 months. Exact terms available vary per lender although options typically include 6, 12, 18, 24, 36, 48 and 60 months. This calculation also includes a typical mandatory fee charged by lenders. This is a one-off establishment fee of \$296.00. Typically, this fee can be paid upfront or, as in this calculation, be capitalised over the contract term, ie. included in the loan amount. This fee can vary per lender and other non-mandatory fees and charges may also apply. The total amount of repayments has been calculated by multiplying 208 weekly repayments (based on a 48 month term) by the weekly repayment amount of \$41.49 which equals \$8,630.74. This calculator does not consider any of your own personal circumstances and we strongly suggest you seek budgeting advice prior to committing to any loan contract. Responsible lending criteria and lender terms and conditions will likely apply to any finalised loan contract. Proof of security and/or vehicle insurance may also be required before proceeding.