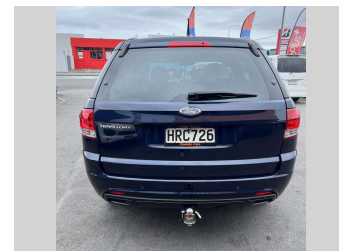
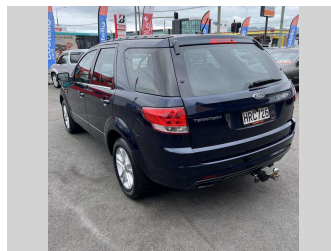
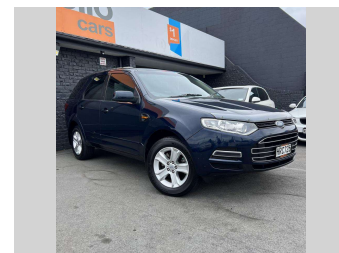


2011 FORD Territory





Purchase Price **\$13,990**

Includes GST
Excludes on-road costs of \$300


Indicative repayments

\$91.90 per week*

Based on a 48 month term & no deposit.
Total repayments (208) = \$19,114.48

Gain peace of mind with Mechanical Breakdown Insurance. Ask us how.



Top features

- » 10 x SRS
- » 24 Valve
- » ABS Braking
- » Air Conditioning
- » Alloy Wheels
- » Bench Seat
- » CD Player
- » Central Locking
- » Chain driven (no camb...
- » Child seat anchor poin...
- » Climate Control
- » Cruise Control
- » Cup holder
- » Digital Display
- » Electric Mirrors
- » Electric Mirrors (Retr...
- » Electric Windows
- » Face Lift Model

Body Style
People Mover

Odometer
168,600 km

Engine
4000 cc

Fuel Type
Petrol


Transmission
Automatic

Wheels
-

VIN
6FPAAAJGATBJ51454

Interior
-

Safety


Based on 2023 UCSR rating for 11-16 models

Reg No.
HRC726

Ext Colour
Blue

History
Ex-Overseas

Seats
5 seats

CO2 Emissions
☆☆☆☆☆☆

Energy Economy
☆☆☆☆☆☆



Annual fuel cost not available

Energy Consumption unknown. Emissions and Energy Economy figures standardised to 3P WLTP.

Stock ID: 5494



Costello Cars | Phone 03 338 9161 | Email sales@costellocars.co.nz
51 Moorhouse Avenue, Addington, Christchurch 8011, New Zealand
www.costellocars.co.nz



4.64 | 258 reviews

* Costello Cars is not a lender nor a financial adviser. Any amounts displayed should not be seen as an offer of finance or taken as financial advice. The interest rate, fees and loan term used in this calculation may not actually represent those available from lenders. Actual interest rates, fees and loan terms will vary per lender and are typically based on an assessment of your credit risk and responsible lending criteria. Any repayment amounts displayed are indicative only and have been calculated using several other indicative inputs. The interest rate used in this calculation is an arbitrary 13.95%, however exact interest rates vary per lender. The term of the loan used in this calculation is 48 months. Exact terms available vary per lender although options typically include 6, 12, 18, 24, 36, 48 and 60 months. This calculation also includes a typical mandatory fee charged by lenders. This is a one-off establishment fee of \$296.00. Typically, this fee can be paid upfront or, as in this calculation, be capitalised over the contract term, ie. included in the loan amount. This fee can vary per lender and other non-mandatory fees and charges may also apply. The total amount of repayments has been calculated by multiplying 208 weekly repayments (based on a 48 month term) by the weekly repayment amount of \$91.90 which equals \$19,114.48. This calculator does not consider any of your own personal circumstances and we strongly suggest you seek budgeting advice prior to committing to any loan contract. Responsible lending criteria and lender terms and conditions will likely apply to any finalised loan contract. Proof of security and/or vehicle insurance may also be required before proceeding.